

Induction, Surgical and Chemical Procedures

INDUCTION:

Ketamine @ 75mg/kg =

Xylazine @ 10mg/kg =
(or DEX @ 0.05 mg/kg)
Ketamine @ 30 mg/kg/hr =

Atropine @ 0.4 mg/kg =

Dexamethasone @ 0.2 mg/kg =

Dextrose @ 10% solutions

OTHER CHEMICALS:

SURGICAL:

Induce

Shave

Betadine and alcohol

Cut skin

Separate membranes and setup area

Antibiotic spray

Vetbond area to setup

Craniotomy outline to include cover slip

Add 0.8ul of SR-101 to virus solution

Inject virus, use 10-15um pipette

Rinse and place agarose 1%

Cement cover slip

Finalize well

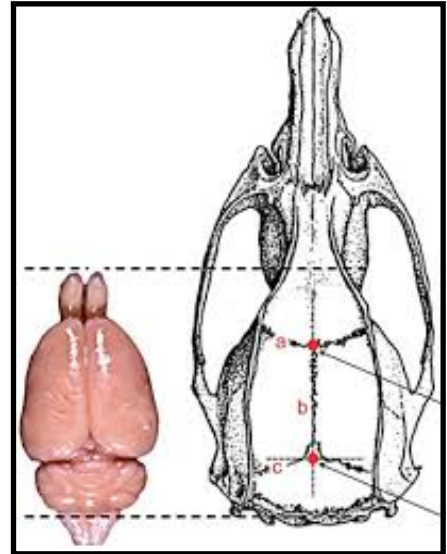
Take picture of injected locations

Antibiotic

Pain reliever

Lactated ringers (0.5ml subq)

Recover under warming heat



POST-OP CARE:

Anti-biotic ointment

Anti-biotic spray

Baytril (5 mg/kg) =

Carprofen/Rimadyl (5-10 mg/kg) =